

# RL-K110

## HARSH HOTLINE

IF YOU CANNOT FIND THE EXACT SPECIFICATIONS TO MATCH YOUR APPLICATION, CALL 800-227-1702.

WE WILL RUN YOUR SPECS THROUGH OUR EXCLUSIVE H.A.P. (HARSH APPLICATION PROGRAM) AND SEND YOU A COMPUTER PRINTOUT VIA FAX OR EMAIL.

EMAIL: [harsh@harshenviro.com](mailto:harsh@harshenviro.com)  
WEB: [www.harshenviro.com](http://www.harshenviro.com)

**THE BEST TIPPING GEAR EVER,  
MADE EVEN BETTER!**

To back-up the best warranty in the industry HARSH has subjected each Rigid Lift Main Frame design to a tough 20,000 cycle test (1/3 of this test simulated maximum off center load conditions). The Rigid Lift performed without main frame failure and very little wear to moving parts.

Many years of customer use and testing in the field is proof positive of excellence and durability of the HARSH Rigid Lift Tipping gear.

- 7 year limited warranty
- World wide recognition
- Industry leader for over 40 years.
- Built and tested to last longer.
- Featuring dynamic stability.
- Minimal weight.
- High polished chrome cylinders
- Fast tipping cycle
- 3100 PSI operating pressure (214 bar)
- Ease of maintenance
- Classified for both dump body (NTEA Class 110) and conversion hoist (NTEA Class K) use.

## SINGLE ACTING

*The First . . .*

*. . . And Still the Best*

### CAPACITY IN TONS

BOX LENGTH (FEET)	CAB TO TRUNNION (INCHES)	OVER-HANG * (INCHES)	DUMP ANGLE			
			MOUNTING LENGTH			
			40° 200"	45° 178"	50° 161"	55° 148"
22	186	36	36.1	32.7	29.6	27.2
	198	24	30.8	29.1	26.3	24.1
	204	18	28.7	27.6	24.9	22.9
24	210	36	30.8	29.1	26.3	24.1
	222	24	26.8	26.2	23.7	21.7
	228	18	25.1	24.6	22.5	20.7
26	234	36	26.8	26.2	23.7	21.7
	246	24	23.6	23.2	21.5	19.7

### DUMP BODY APPLICATIONS

16	-	6	-	-	31.6	29.0
	-	12	-	-	33.8	31.0
18	-	6	-	-	27.8	25.6
	-	12	-	-	29.6	27.2

### NOTE: CAPACITY IN TONS AT 3100 PSI (214 bar)

(1) Overhang based on 44" from center line of tail hinge pin to center line of trunnion on tandem axle trucks, with 2" clearance between cab and box.

(2) These capacities are for the body and payload together with an evenly distributed, nondiminishing, solid load for the full dump cycle. The center of gravity of the load is assumed to be at the center of the body.

SPECIFICATIONS SUBJECT TO CHANGE WITHOUT NOTICE.

*7 Year Limited  
Frame Warranty*

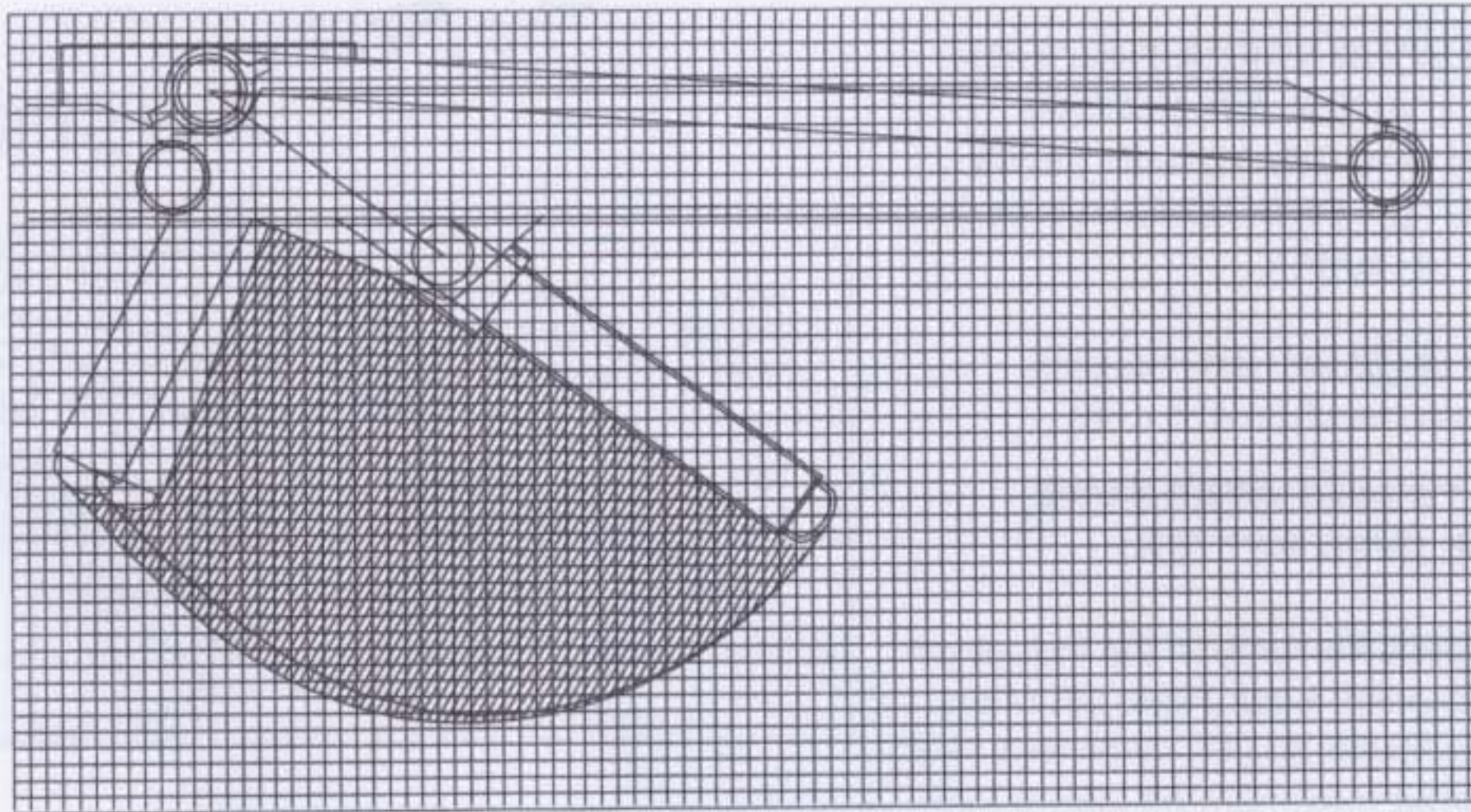
**HARSH**  
Tipping Gear



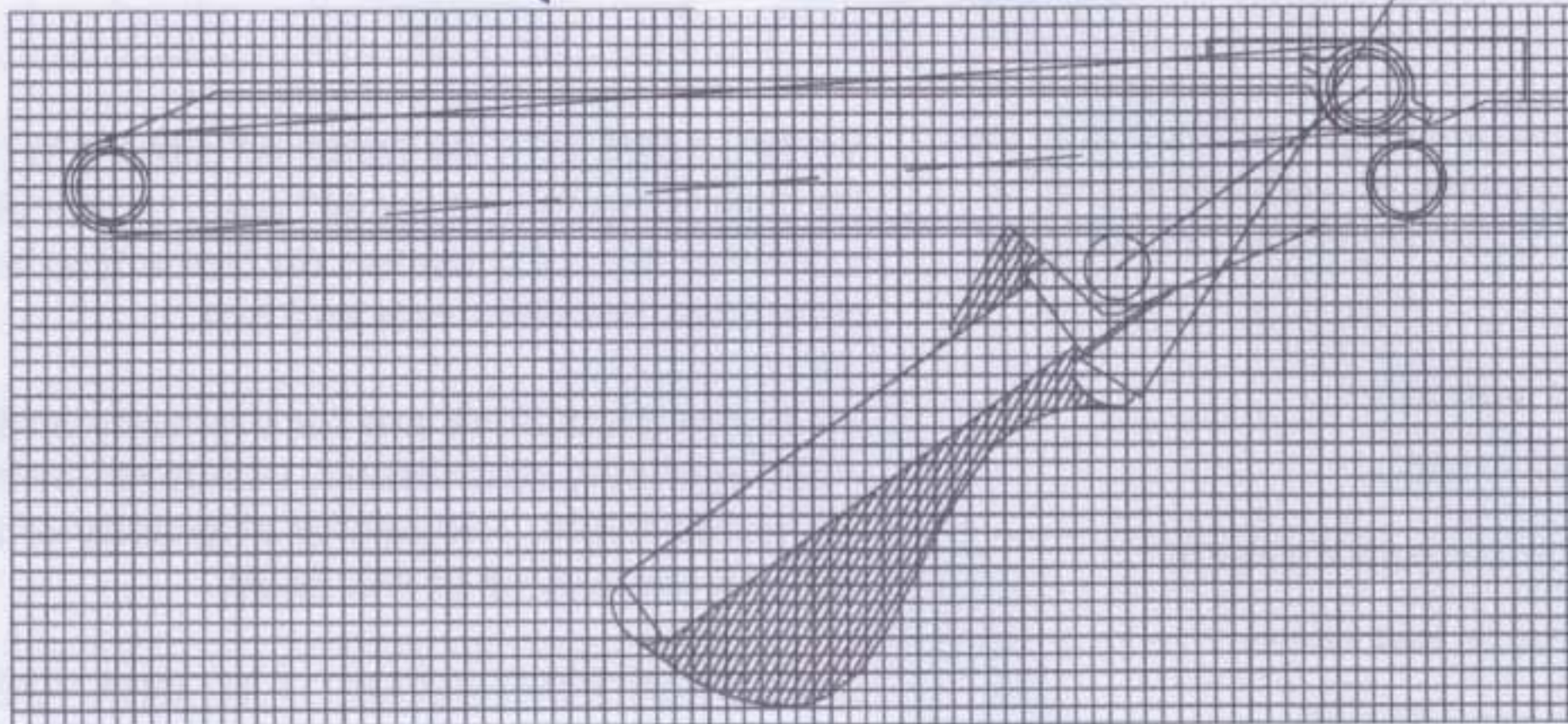
RL-K110

RL-K110

REVERSE MOUNT



STANDARD MOUNT



Cylinder Path: 1 square = 1 inch

